


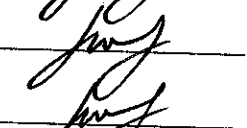
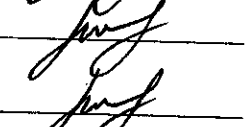
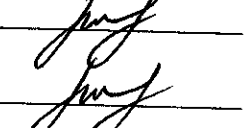
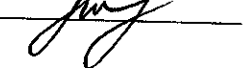


Drain: WILLIAM McKINSTRAY Drain #: 270
Improvement/Arm: 116TH ST. RECONSTRUCTION
Operator: J. LIVINGSTON Date: 3-23-04
Drain Classification: Urban/Rural Year Installed: 2002

GIS Drain Input Checklist

- Pull Source Documents for Scanning _____

- Digitize & Attribute Tile Drains _____
- Digitize & Attribute Storm Drains _____

- Digitize & Attribute SSD _____
- Digitize & Attribute Open Ditch _____
- Stamp Plans _____
- Sum drain lengths & Validate _____

- Enter Improvements into Posse _____

- Enter Drain Age into Posse _____

- Sum drain length for Watershed in Posse _____

- Check Database entries for errors _____


Gasb 34 Footages for Historical Cost
Drain Length Log

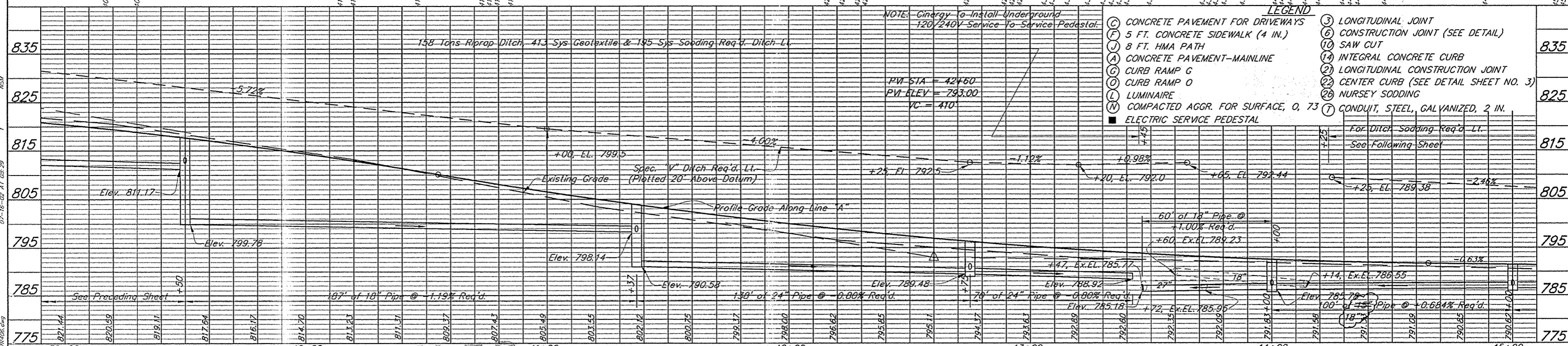
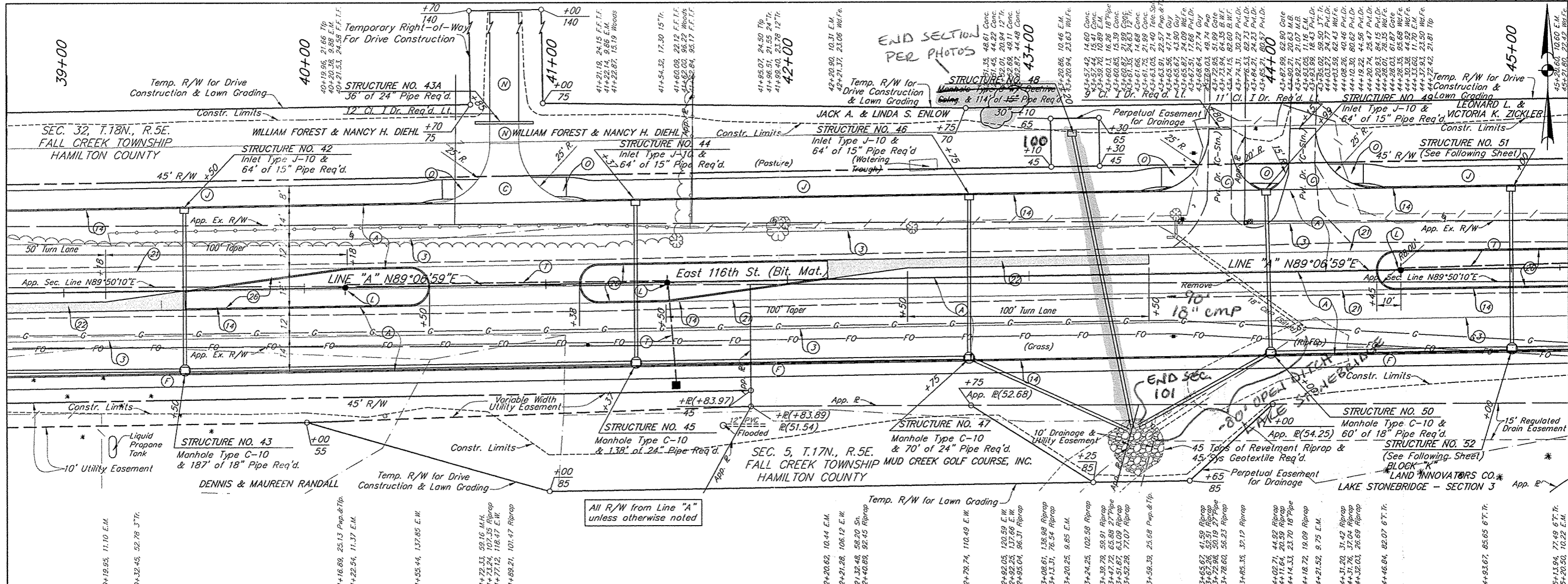
Drain-Improvement: WILLIAM M^S KINSTRAY DRAIN - 116TH ST RECONSTRUCTION

Drain Type:	Size:	Length	Length (DB Query)	Length Reconcile	Price:	Cost:
RCP	24"	79'	79'		18. ⁰⁰ / ₁₁	1422. ⁰⁰
	30"	114'	114'		24. ⁶⁰ / ₁₁	2804. ⁶⁰
CMP	24"	44'	44'		50. ⁰⁰ / ₁₁	2200. ⁰⁰

Sum: 237' " 237' \$6426.40

Final Report: N/A

Comments:
178' OF THE LAKE STONEBRIDGE RELOCATION WAS REMOVED
FOR THIS RECONSTRUCTION. 237' OF DRAIN WAS ADDED.
THE NET LENGTH OF DRAIN ADDED FOR THIS RECONSTRUCTION
IS 59'.



LEGEND

(C) CONCRETE PAVEMENT FOR DRIVEWAYS	(3) LONGITUDINAL JOINT
(F) 5 FT. CONCRETE SIDEWALK (4 IN.)	(6) CONSTRUCTION JOINT (SEE DETAIL)
(J) 8 FT. HMA PATH	(10) SAW CUT
(A) CONCRETE PAVEMENT-MAINLINE	(14) INTEGRAL CONCRETE CURB
(C) CURB RAMP 6	(21) LONGITUDINAL CONSTRUCTION JOINT
(O) CURB RAMP 0	(22) CENTER CURB (SEE DETAIL SHEET NO. 3)
(L) LUMINAIRE	(26) NURSEY SODDING
(N) COMPACTED AGGR. FOR SURFACE, 0.73	(7) CONDUIT, STEEL, GALVANIZED, 2 IN.
(E) ELECTRIC SERVICE PEDESTAL	

FILED
OCT 02 2002
OFFICE OF HAMILTON COUNTY SURVEYOR

RECOMMENDED FOR APPROVAL: *Samuel R. Jones* 7/1/02
DESIGN ENGINEER DATE

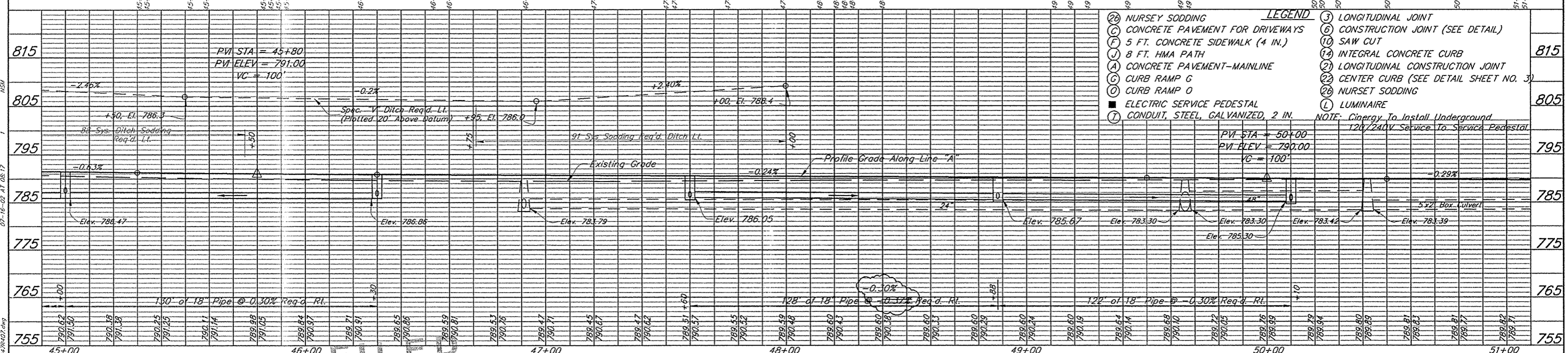
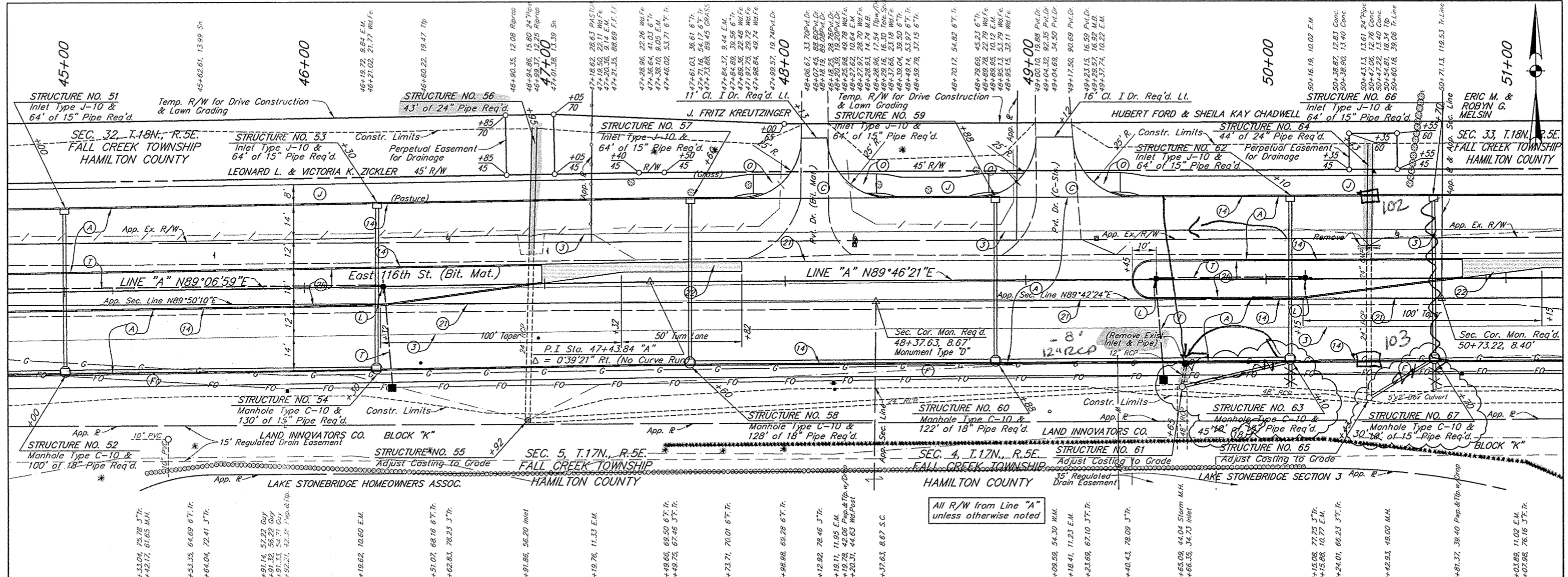
DESIGNED: JEK DRAWN: JM
CHECKED: SPH CHECKED: SPH

FISHERS
116TH STREET LINE A INDIANA
8450 WESTFIELD BLVD., SUITE 300
INDIANAPOLIS, IN 46240
317-494-0900
FAX 317-735-4616

B&S
BUILDER TRAINING SERVICES
509 WEST 84TH DRIVE, SUITE G
MERRILLVILLE, IN 46410
219-769-3333
FAX 219-769-2377

HORIZONTAL SCALE 1"=20'	FILE 3947
VERTICAL SCALE 1"=10'	DESIGNATION
SURVEY BOOK	SHEET 22 OF 135
CONTRACT	PROJECT

BPS NO. 3947.07



OCT 02 2002

OFFICE OF HAMILTON COUNTY SURVEYOR

SW Cor. Fnc. Post

Line "A"

NE Cor. Fnc. Post

Mag Nail (Set)

RECOMMENDED FOR APPROVAL: *Samuel R. ...* 7/16/02

DESIGN ENGINEER DATE

DESIGNED: JEK DRAWN: JM

CHECKED: SPH CHECKED: SPH

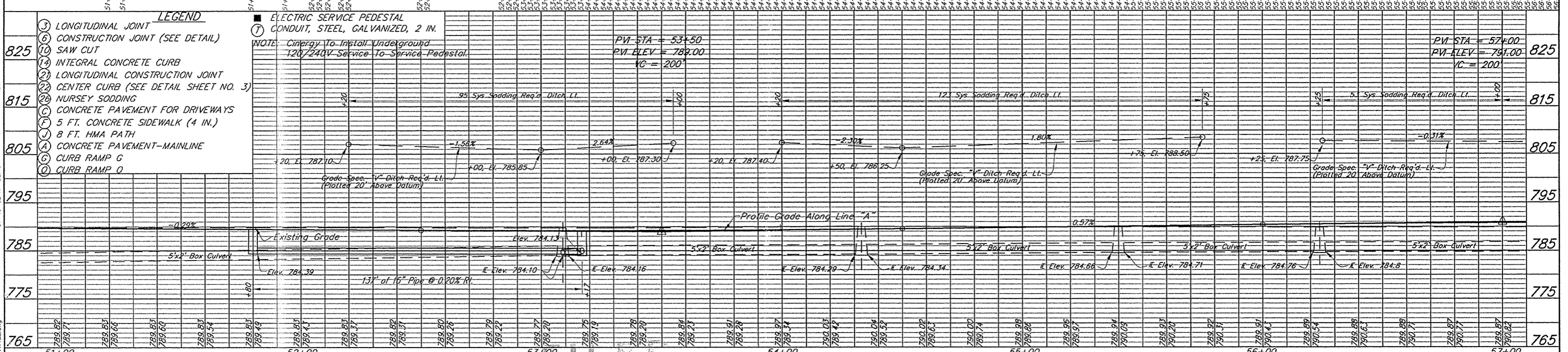
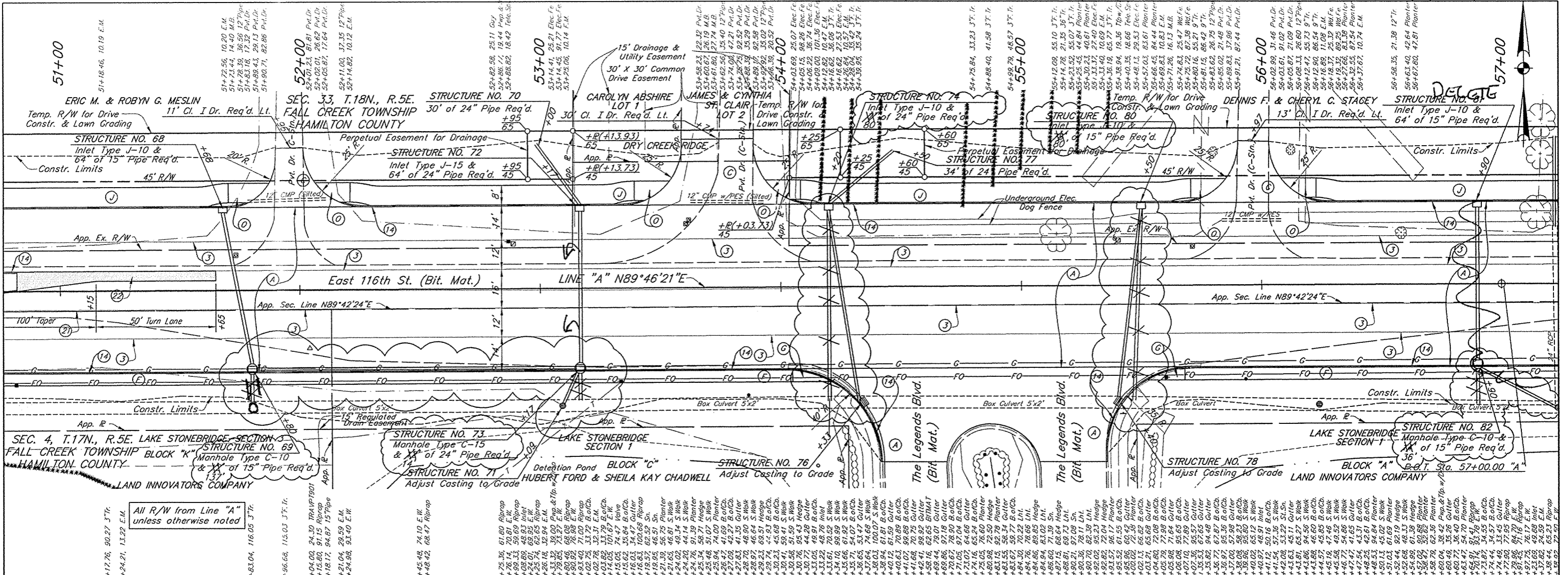
116TH STREET LINE A INDIANA

FISHERS

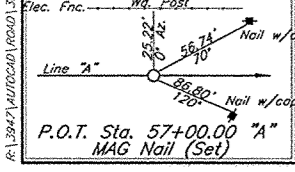
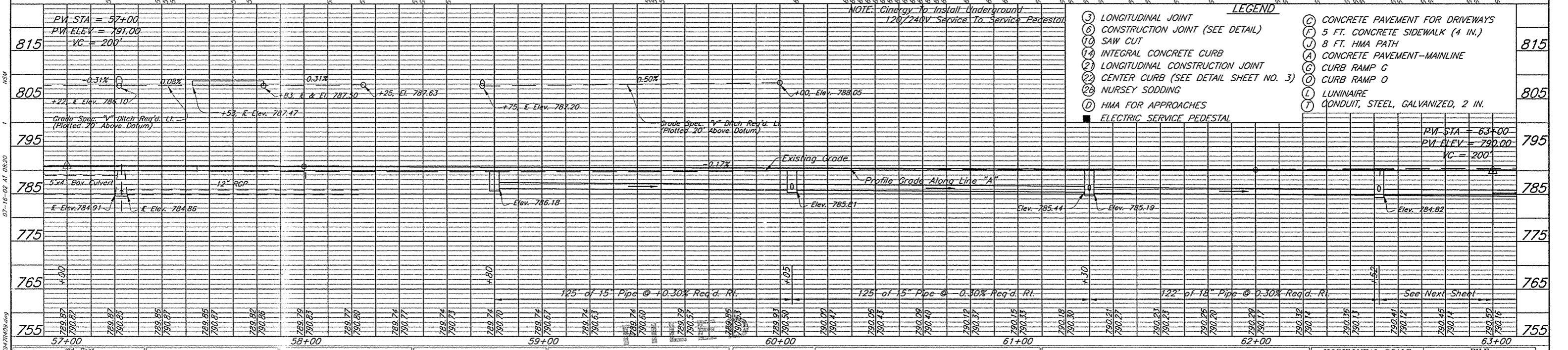
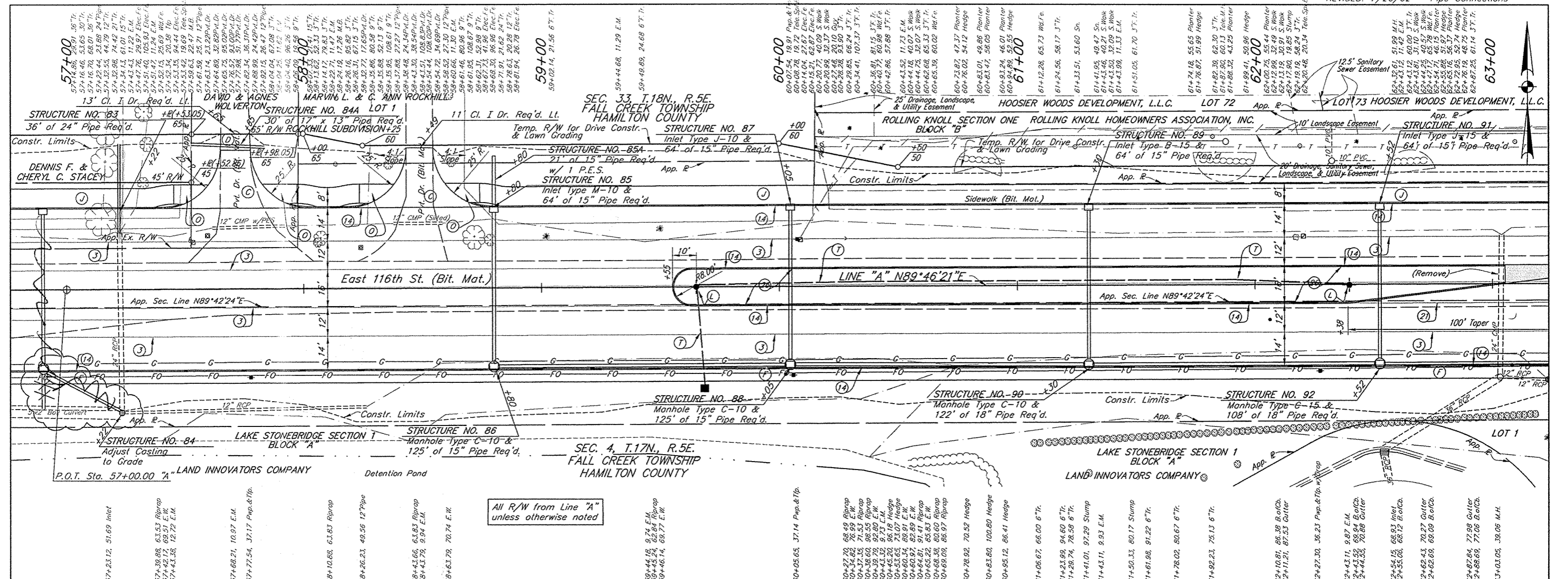
508 WESTFIELD BLVD., SUITE 300
MERRILLVILLE, IN 46410
781-783-1111 FAX 317-783-4616

508 WEST 64TH DRIVE, SUITE G
MERRILLVILLE, IN 46410
781-789-2333 FAX 219-789-2377

HORIZONTAL SCALE	FILE
1"=20'	3947
VERTICAL SCALE	DESIGNATION
1"=10'	
SURVEY BOOK	SHEET
	23 OF 138
CONTRACT	PROJECT



LEGEND, NOTES, and project information including scales, sheet number (3947), and project name (116TH STREET LINE A INDIANA). Includes professional seals for Daniel J. Isaacs and Daniel R. Kasper.



OCT 02 2002

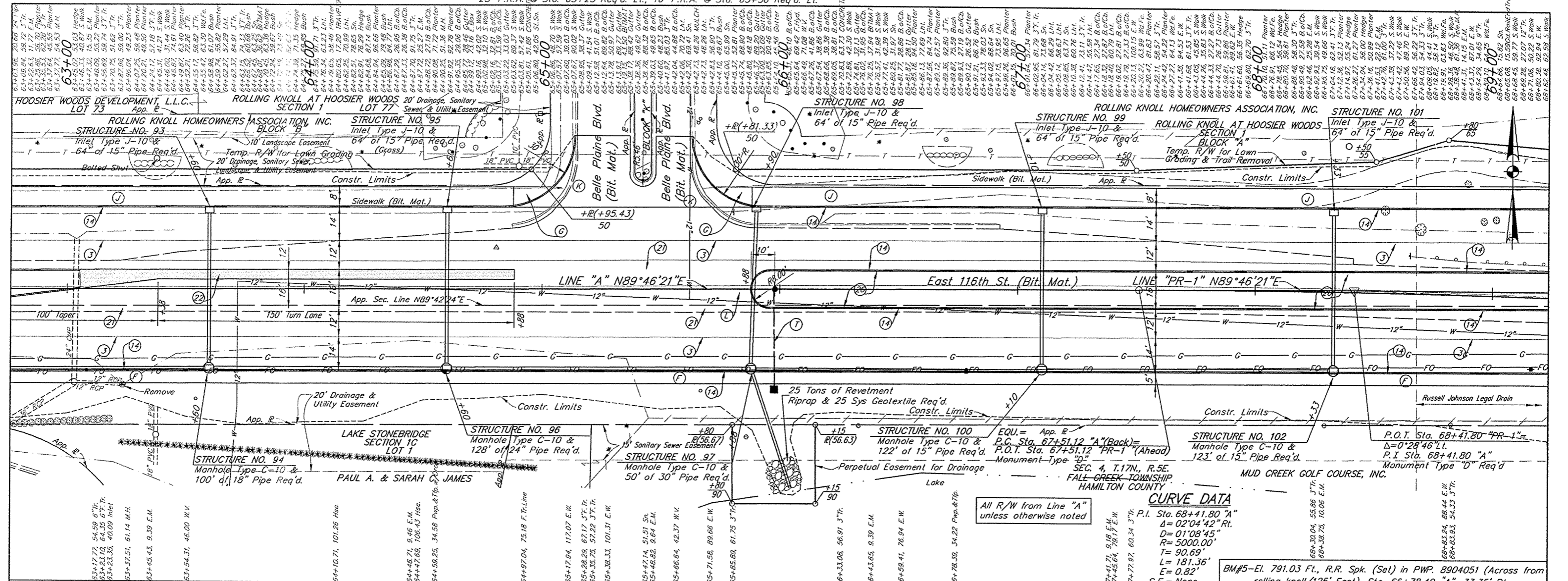
OFFICE OF HAMILTON COUNTY SURVEYOR

This copy printed from the Digital Archive of the Hamilton County Surveyor's Office

RECOMMENDED FOR APPROVAL: <i>Samuel Rouse</i> 7/16/02	DESIGN ENGINEER DATE	FISHERS	116TH STREET INDIANA
DESIGNED: JEK	DRAWN: JM		
CHECKED: SPH	CHECKED: SPH		

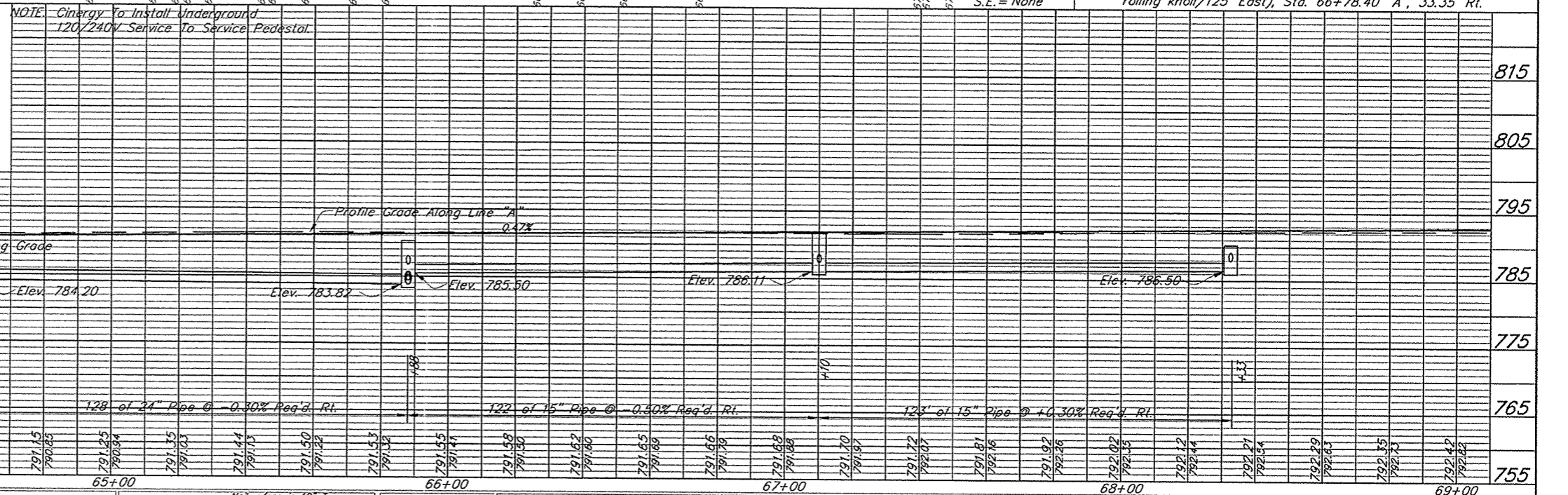
HORIZONTAL SCALE 1"=20'	FILE 3947
VERTICAL SCALE 1"=10'	DESIGNATION
SURVEY BOOK	SHEET
CONTRACT	PROJECT

23' P.R.A. @ Sta. 65+25 Req'd. L.I., 16' P.R.A. @ Sta. 65+56 Req'd. L.I.

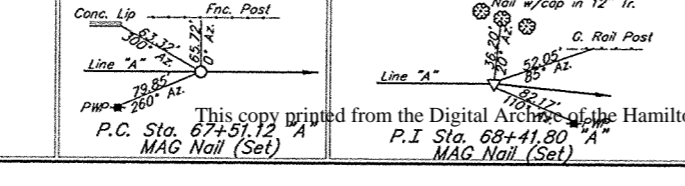


LEGEND

(3) LONGITUDINAL JOINT	(C) CONCRETE PAVEMENT FOR DRIVEWAYS
(6) CONSTRUCTION JOINT (SEE DETAIL)	(F) 5 FT. CONCRETE SIDEWALK (4 IN.)
(10) SAW CUT	(J) 8 FT. HMA PATH
(14) INTEGRAL CONCRETE CURB	(A) CONCRETE PAVEMENT-MAINLINE
(21) LONGITUDINAL CONSTRUCTION JOINT	(G) CURB RAMP G
(22) CENTER CURB (SEE DETAIL SHEET NO. 3)	(O) CURB RAMP O
(23) NURSERY SODDING	(L) LUMINAIRE
P.V. STA = 63+00	(E) ELECTRIC SERVICE PEDESTAL
P.V. ELEV = 790.00	(T) CONDUIT, STEEL, GALVANIZED, 2 IN.
VC = 200	



OCT 02 2002
 OFFICE OF HAMILTON COUNTY SURVEYOR



PROFESSIONAL ENGINEER
 DANIEL J. ISLAS
 No. PE60910078
 STATE OF INDIANA

RECOMMENDED FOR APPROVAL: *Samuel R. Jones* 7/16/02
 DESIGN ENGINEER DATE
 DESIGNED: JPK
 OFFICE: One Hamilton Co. Square, Ste. 188, Noblesville, IN
 CHECKED: SPH
 DRAWN: JN
 CHECKED: SPH

FISHERS
 116TH STREET LINE A INDIANA
 6450 WESTFIELD BLVD., SUITE 300
 N. MERRILLVILLE, IN 46410
 219 769-2333
 FAX 317 713-4616

HORIZONTAL SCALE 1"=20'	FILE 3947
VERTICAL SCALE 1"=10'	DESIGNATION
SURVEY BOOK	SHEET 26 OF 135
CONTRACT	PROJECT

BFS NO. 3947-07